

Technology +

companionSUITE software deviceANALYSER reader

Manual



TRIDONIC

Table of Contents

1. Functionality	3
2. Start deviceANALYSER reader	3
3. Create a parameter file for one device	3
4. Create a parameter file for several devices	4
5. Minimize deviceANALYSER reader	5
6. Close deviceANALYSER reader	5
7. Start of deviceGENERATOR or deviceANALYSER	5
8. Settings	5
9. Status information	6
10. History	6

deviceANALYSER reader

1. Functionality

The deviceANALYSER reader is part of the companionSUITE and allows to read out a TRIDONIC driver via NFC or DALI and save the data as a parameter file (with format: .traf).

This file can be evaluated directly via the deviceANAYSER via drag & drop.

The deviceANALYSER reader can be optionally installed locally on the computer during the installation of the companionSUITE. English and German can be selected as language.

These interfaces are supported:

Interface	Description
NFC	FEIG reader / writer
DALI	DALI USB

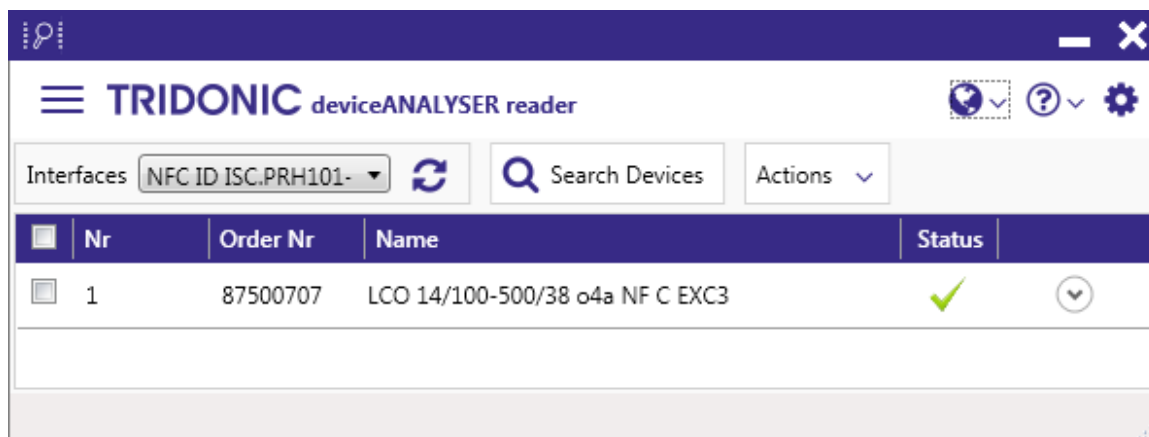
⚠ CAUTION!

After programming the device via NFC, power up the device once for one second so that the deviceANALYSER can read out the parameters.

2. Start deviceANALYSER reader

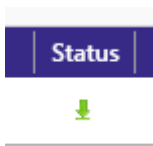
Windows START => **All Programs** => Folder **Tridonic** => select **deviceANALYSER reader**.

3. Create a parameter file for one device



1. Select an interface (selectable via drop down menu).
2. Click on **Search Devices**.
-> All available devices are listed.
3. Click on the status icon (here: a green arrow) to the right of the device name to read out the selected devices.

deviceANALYSER reader



-> Data is read out.

->When all data is read out, the status icon changes to a green check mark .

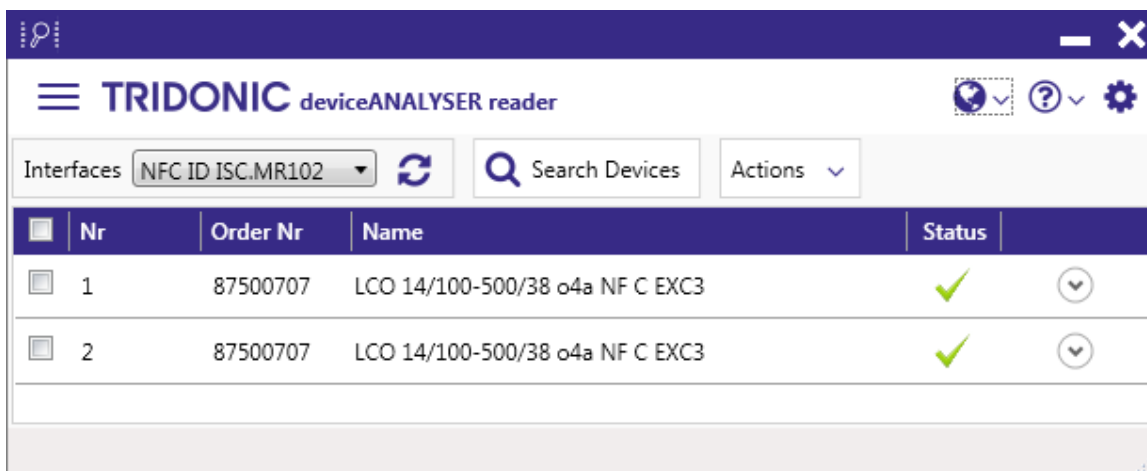
- To generate the parameter file, select the line with the read out device with the mouse and drag and drop it to the deviceANALYSER or to the desktop.

NOTICE

With the arrow symbol on the far right, the file can either be given a default name in the **GTIN:** field ("Global Trade Item Number") or a separate name in **RMA:** field ("Return Merchandise Authorization").

The default name of the file consists of GTIN number with date and time code. Example: Tridonic_9006210685571_190924_131040_1.traf

4. Create a parameter file for several devices



If several devices are available, they can be selected via the check box in the first column.

- Select an interface (selectable via drop down menu).
- Click on **Search Devices**.
-> All available devices are listed.
- Select checkbox(es) for one or several devices.
- Click on menu **Actions**.
-> Submenu **Readout** or submenu **save** opens.
- Select desired submenu.
-> All selected devices are read out or all the values will be saved.

deviceANALYSER reader

5. Minimize deviceANALYSER reader

With the Windows key _ (underscore), the **deviceANALYSER reader** window can be pushed into the taskbar.

6. Close deviceANALYSER reader

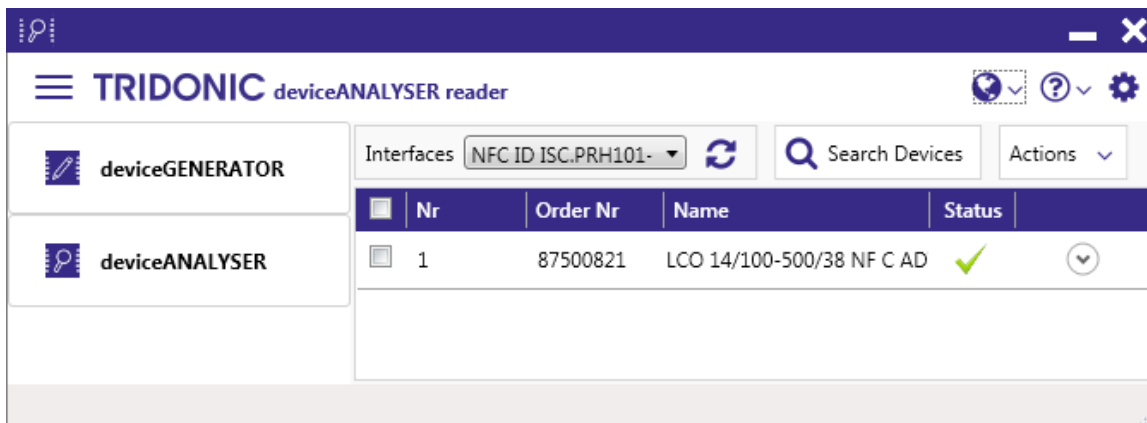
With the Windows key X, the **deviceANALYSER reader** will be closed.
After closing, all occupied interfaces are freed and temporary files are deleted.

7. Start of deviceGENERATOR or deviceANALYSER

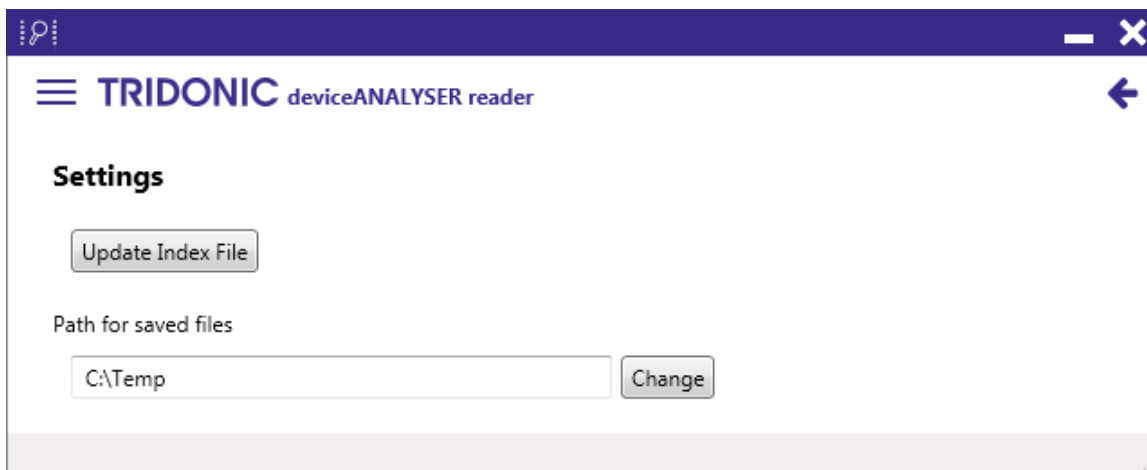


With a click on the menu symbol it is possible to start

- > the deviceGENERATOR -or-
- > the deviceANALYSER



8. Settings



deviceANALYSER reader

- _ With the menu button **Update Index File** the device list can be updated.
- _ With the input field **Path for saved files** the path for the parameter file can be set.

9. Status information

Status information is displayed in the lower part of the window.

10. History

Version	Changes	Date	Comments
2.3	New <ul style="list-style-type: none">_ Consistent two-digit version number_ Minimization and closing of the software is now possible with Windows standard keys	10. 2019	
